



CONTACT US

Phone: 800.931.1562

Email: sales@gymsfordogs.com

PRO SERIES.

ADA DOG WASH STATION

Model: DL-DWPRO-60ADA

Quality Dog Wash Tubs for Apartments, Condos, HOAs, Campgrounds, Hotels, RV Parks, Animal Clinics, Daycares and more! Professional grade, perpendicular & parallel accessible - ADA Friendly



ADA DOG WASH STATION



PRO SERIES

Model #: DL-DWPRO-60ADA

The Stainless-Steel Doggie Wash Tub™ features the patented drainage system that keeps pet hair from clogging drains (U.S. Patent 7080608). No door panel is needed because of the lowered step-over threshold makes it easy for dogs to enter tub. The step stool cuts steps in half and stows beneath the tub directly under the step-over threshold.

**ADA FRIENDLY
PERPENDICULAR & PARALLEL ACCESS**



Clean



Quality








Durable

Key Features

ADA DOG WASH STATION PRO SERIES

Model #: DL-DWPRO-60ADA

-  14 gauge 304 Stainless Steel all-welded construction.
-  Lift-out door allows easy access without the need of ramps or stair systems.
-  The high-capacity hair catching system keeps hair out of the drain while allowing all water to drain properly (U.S. Patent 7080608)
-  Tub bottom platform & mat set for dog to stand on, which gives the dog traction and comfort and prevents slipping and sliding on wet soapy surfaces, and is helpful in keeping dogs under control
-  Choice of left or right hand plumbing.

ACCESSORY KIT INCLUDES

Stainless steel step-up stool, elevating bottom grate and mat set, quality hose fixture, and bottle holder.



Hose Fixture Step-up Stool Bottle Holder Bathing Mat



COOL DOG™ WASH TUBS

FAUCET

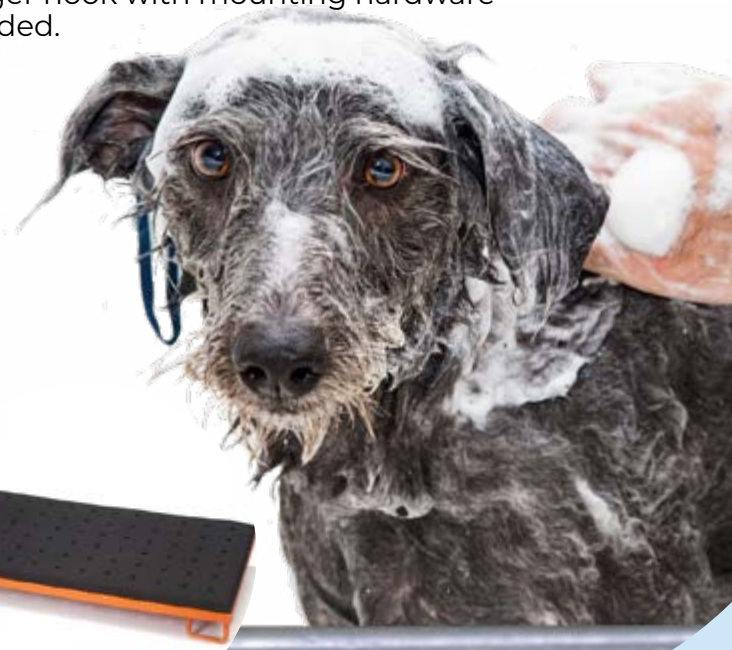
Wall-mounted Faucet has backflow preventer, flexible stainless steel hose and angled chrome-plated brass spray valve with automatic shutoff

Built in spring checks to prevent crossflow of water.

Hanger hook with mounting hardware included.



**ADA FRIENDLY
PERPENDICULAR &
PARALLEL ACCESS**



FAUCET

ADA DOG WASH STATION PRO SERIES

Model: DL-DWPRO-60ADA

Our Stainless Steel Dog Wash Tub comes with an easy install wall mounted High Pre-Rinse Faucet. The Faucet comes with a host of features to make installation and use as easy as possible.

1.15 GPM FLOW RATE

The spray valve has a 1.15 GPM flow rate which helps you conserve water and save money on your utility bill. The easy to use hold-down ring lets you lock it in a continuous spray position for as long as you need.

96" FLEX HOSE

The flexible stainless steel hose on this model provides great range of motion and lets you direct the water exactly where you need it. This spring helps it retain its shape and keeps the spray valve positioned above the sink.

ADJUSTABLE WALL MOUNT CENTERS

The faucet mounts to the wall using a pair of 1/2" NPT female inlets with 2" flanges.



FAUCET

ADA DOG WASH STATION PRO SERIES

Model: DL-DWPRO-60ADA



COOL DOG™ WASH TUBS

LEVER HANDLES, COMPRESSION CARTRIDGES

The Cool Dog™ Wash Tub faucet comes with lever handles. The cartridges feature a sprindle design that moves up and down within a removable insert, which produces less wear and tear and greater reliability when compared to similar compression-style cartridges that move up and down within the faucet body itself. Additionally, this model comes with spring checks to prevent cross flow.

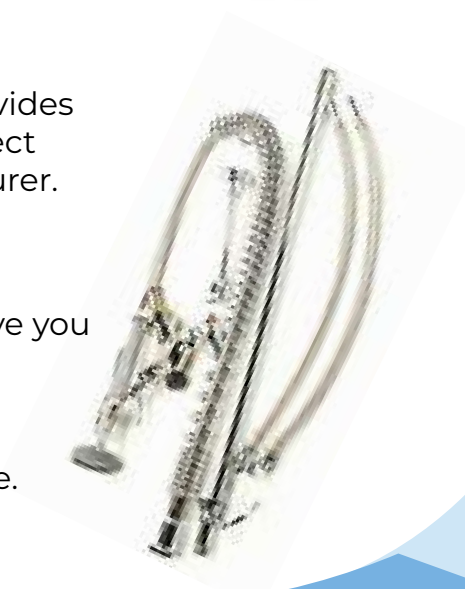


CHROME-PLATED BRASS

The chrome-plated brass construction, provides a polished look with the durability you expect from an industry-leading faucet manufacturer.

EASY-INSTALL DESIGN

This unit features innovative EasyInstall design to save you time when setting it up. The riser is designed with a lock nut and bushing that pop down into the faucet base, so that you only need to tighten the nut to secure the riser rather than threading it into the base.



ADA FRIENDLY

ADA DOG WASH STATION PRO SERIES

Model #: DL-DWPRO-60ADA

ADA CONSIDERATIONS

ADA Accessibility requirements are becoming an increasingly important consideration when choosing the design of a petwash station. At this time, there is no clear definition for petwash accessibility. Exactly what qualifies as an ADA compliant pet wash tub is subject to interpretation.

FEATURES THAT MEET ADA REQUIREMENTS

-  27.5" undertub clearance for wheelchair access.
-  33.5" rim elevation
-  6" depth to accommodate maximum downward reach requirement.
-  24" reach to tethering points.
-  18" Maximum reach to faucet controls.
-  Faucet fixture mounting at 40" elevation.
-  No undertub obstructions attached to tub structure.

In some cases, interpretations of ADA compliance will result in the need to install a petwashtub that is less than optimally user-friendly, even though the tub meets the technical requirements. In such cases, it may become necessary to install more than one petwash tub so that there is a combination of ADA compliance and user-friendliness, space permitting.



ADA FRIENDLY
PERPENDICULAR &
PARALLEL ACCESS



COOL DOG™
WASH TUBS

DISCLAIMER

Please check your local ADA requirements if you have any questions regarding measurements and clearance accessibility standards.

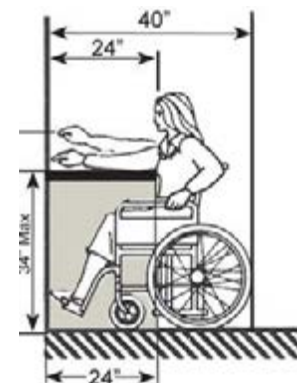


Diagram #1
Reach In

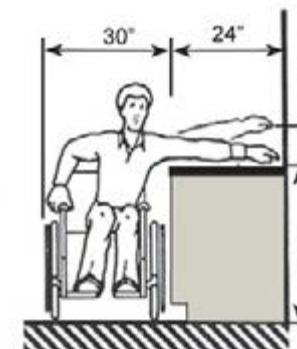
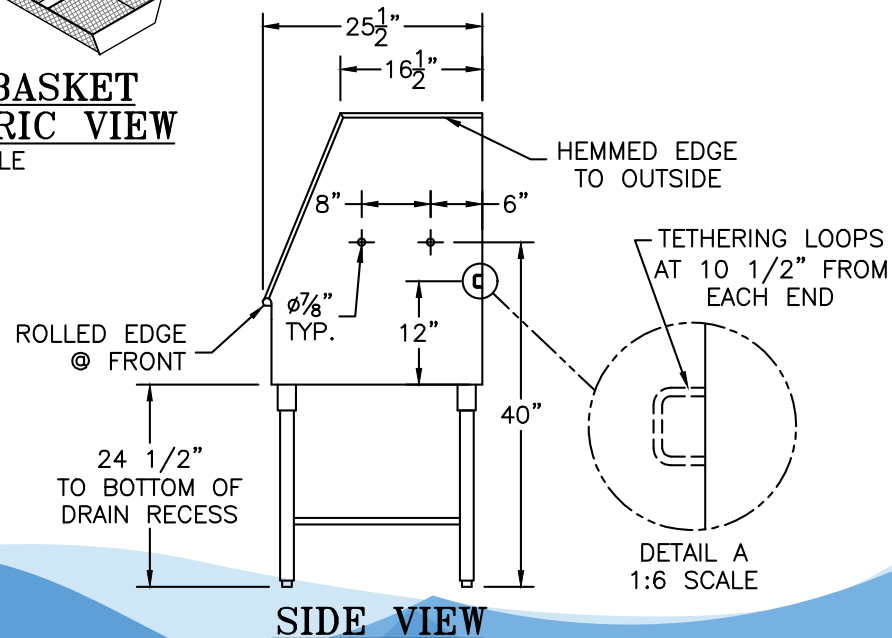
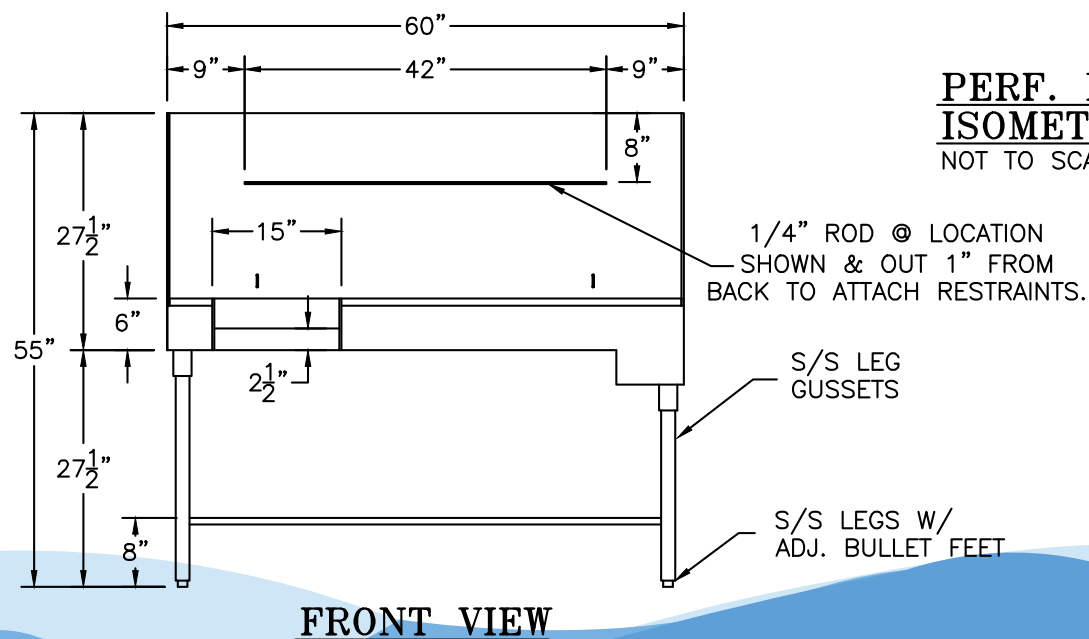
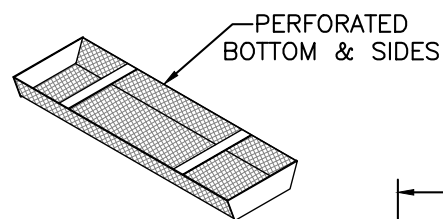
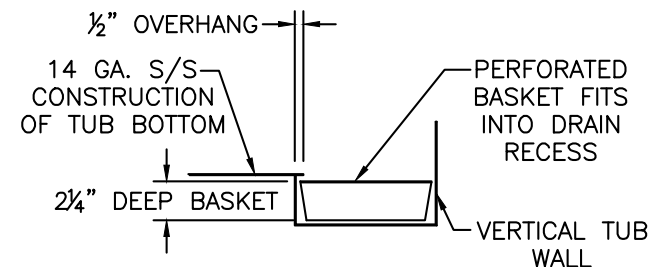
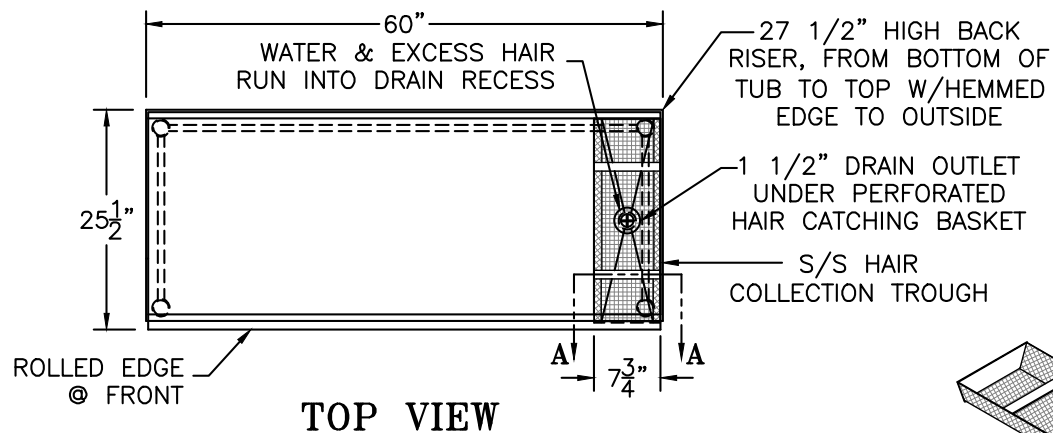


Diagram #2
Reach Over

ADA DOG WASH STATION

MODEL: DL-DWPRO-60ADA - RIGHT DRAINING SYSTEM



DISCRIPTION
60-INCH STAINLESS STEEL STEP-IN ANIMAL
BATHTUB WITH BUILT-IN HAIR CATCHING
SYSTEM - RIGHT SIDE PLUMBING

SCALE
1/2"=1'-0"

MODEL

DL-DWPRO-60ADA U.S. PATENT 7080608

NOTE: ALL DIMENSIONS MAY VARY SLIGHTLY DUE
TO NORMAL MANUFACTURING TOLERANCES.

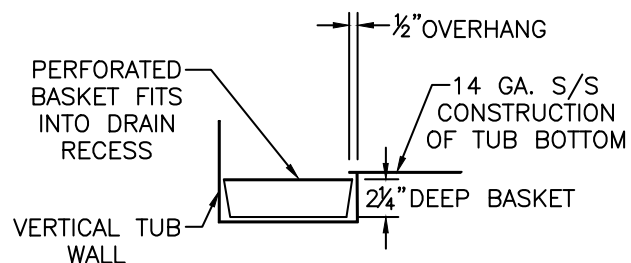
800.931.1562

Email: Sales@GymsForDogs.com

www.CoolDogWashTubs.com

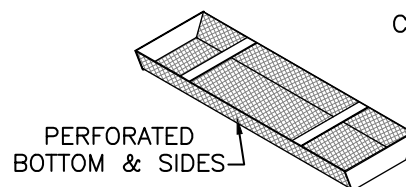
ADA DOG WASH STATION

MODEL: DL-DWPRO60ADA - LEFT DRAINING SYSTEM



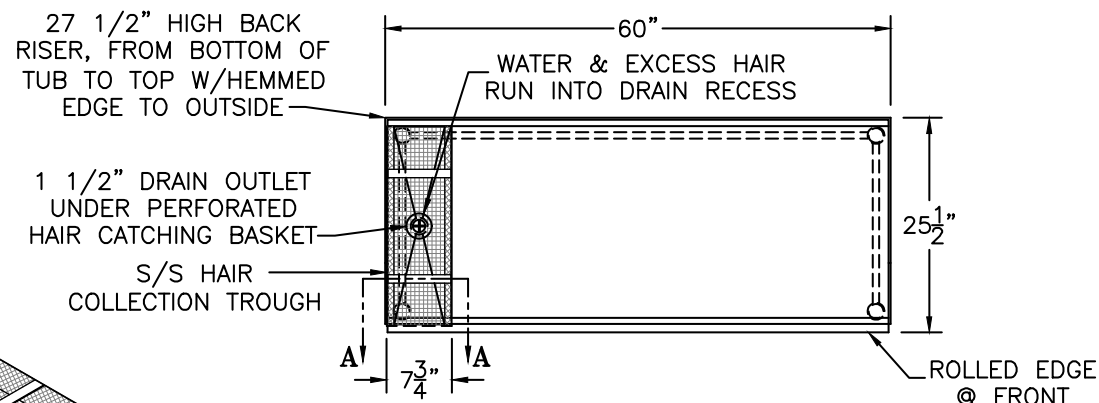
SECTION A-A

SCALE: x 2

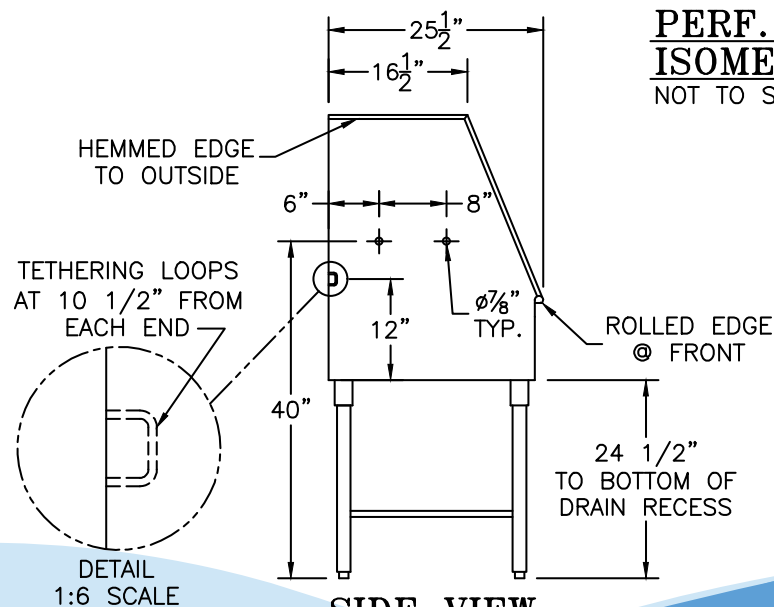


PERF. BASKET ISOMETRIC VIEW

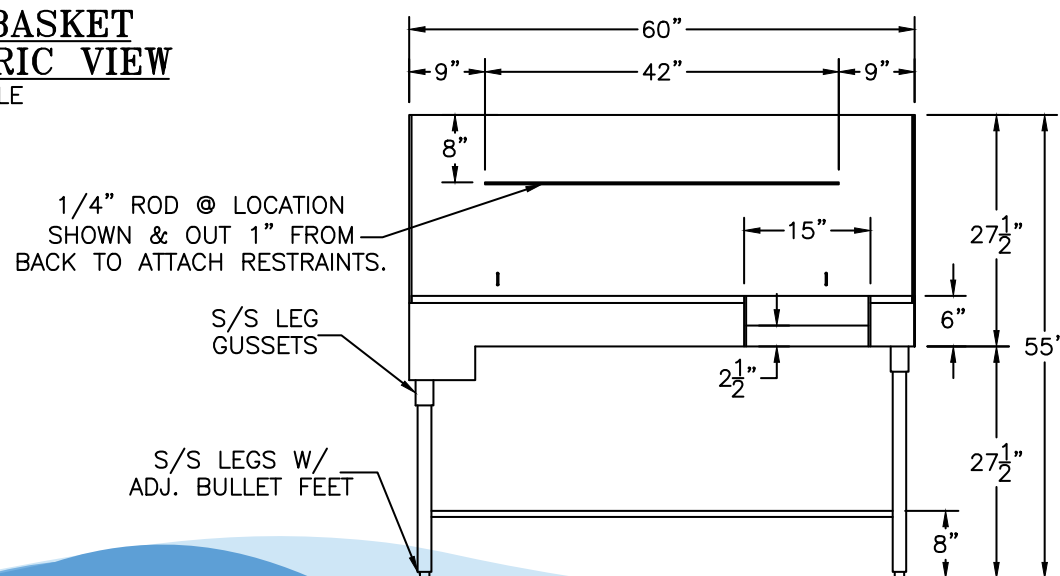
NOT TO SCALE



TOP VIEW



SIDE VIEW



FRONT VIEW

DISCRIPTION
60-INCH STAINLESS STEEL STEP-IN ANIMAL
BATHTUB WITH BUILT-IN HAIR CATCHING
SYSTEM - LEFT SIDE PLUMBING

SCALE
1/2"=1'-0"

MODEL

DL-DWPRO-60ADA U.S. PATENT 7080608

NOTE: ALL DIMENSIONS MAY VARY SLIGHTLY DUE
TO NORMAL MANUFACTURING TOLERANCES.

800.931.1562

Email: Sales@GymsForDogs.com

www.CoolDogWashTubs.com

ADA DOG WASH STATION

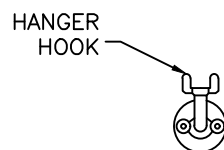
Model: DL-DWPRO-60ADA - FAUCET INSTALLATION

PRODUCT DESCRIPTION:

Pre-Rinse Unit: EasyInstall 8" Wall Mount Mixing Faucet, Quarter-Turn Eterna Cartridges w/ Spring Checks, Lever Handles, 96" Flexible Stainless Steel Hose, 1.42 GPM Spray Valve & 1/2" NPT Female Inlets.

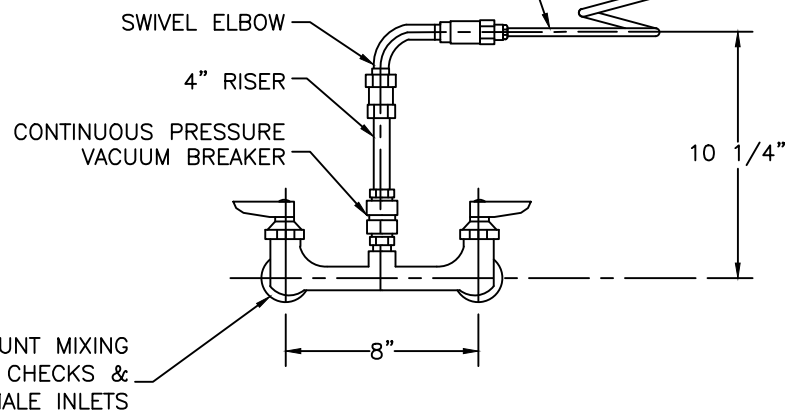
PRODUCT COMPLIANCE:

ASME A112.18.1 / CSA B125.1
NSF 61 - SECTION 9
NSF 372 (LOW LEAD CONTENT)
EPA 2005 (PRSV)



ANGLED LIGHTWEIGHT
ALUMINUM SPRAY VALVE
AND GRIP HANDLE

SELF COILING 9 FT.
MAXIMUM EXTENSION
POLYURETHANE HOSE



NOTE: ALL DIMENSIONS MAY VARY SLIGHTLY DUE
TO NORMAL MANUFACTURING TOLERANCES.

800.931.1562
Email: Sales@GymsForDogs.com
www.CoolDogWashTubs.com



Warranty

ADA DOG WASH STATION PRO SERIES



COOL DOG™ WASH TUBS

Cool Dog™ Wash Tubs are warranted to be free of defects in materials and workmanship for a period of ONE YEAR from purchase date. This warranty applies to all features and components of the metal structure. Nitrile rubber insert pads (if included) are considered to be wearout components and not covered by this warranty.

Whenever a Cool Dog™ Wash Tub requires repair or replacement under the terms of this warranty, it must be shipped prepaid to the manufacturer.

The Manufacturer will, at its discretion, repair or replace any wash tub requiring service under terms of this warranty at no charge to the owner of the bathtub. This warranty applies only to the original purchaser of the wash tub. It cannot be transferred to a secondary party.

Damage caused by misuse or mishandling of the product will not be covered under terms of the warranty. Terms of the warranty are subject to change at any time without notice.

Any inquiries regarding the warranty for Cool Dog™ Wash Tubs (including any built-in components) should be directed to Cool Dog™ Wash Tubs.

